


 Unità carrellata da 1,5 HP per l'aspirazione e la filtrazione di fumi di saldatura in impieghi poco gravosi. Agile, maneggevole e performante, ECOMINOR è equipaggiato con una batteria di 4 filtri in sequenza per filtrare meccanicamente e deodorare il fumo aspirato. Braccio autoportante articolato da 3 mt incluso. Portata max di 1.400 m³/h. Idoneo per impieghi poco gravosi.

 A 1.5 HP, trolley mounted unit for extracting and filtering fumes produced in light welding applications. ECOMINOR is agile, manageable and offers high performance, it is supplied with a battery of 4 mechanical filters in sequence that filter and deodorise the fumes. A 3 m self-supporting articulated arm is included. Max capacity 1.400 m³/h. Light process.





 Unité mobile de 1,5 HP pour l'aspiration et la filtration de fumées de soudure lors d'utilisations légères. Agile, maniable et puissant, ECOMINOR est équipé d'une batterie de 4 filtres successifs pour le filtrage mécanique et la désodorisation de la fumée aspirée. Equipé avec bras articulé autoportant de 3 m. Débit max de 1.400 m³/h. Emplois peu lourdes.

 Fahrbare 1,5 PS Einheit für das Absaugen und Filtern von Schweißrauch für den leichteren Einsatz. ECOMINOR ist handlich, beweglich und leistungsstark und mit einer Batterie von 4 Reihenfiltern für die mechanische Filterung und Geruchsverbesserung des angesaugten Rauchs ausgestattet. Geliefert mit einen selbsttragenden Gelenkarm 3 m Lang. Max. Förderleistung 1.400 m³/h. Wenig schweren Arbeiten.

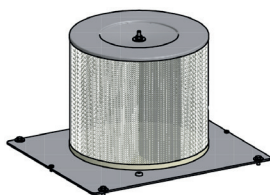
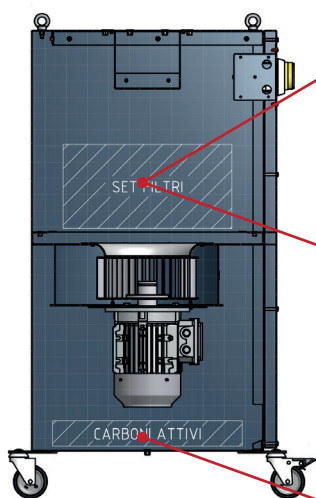
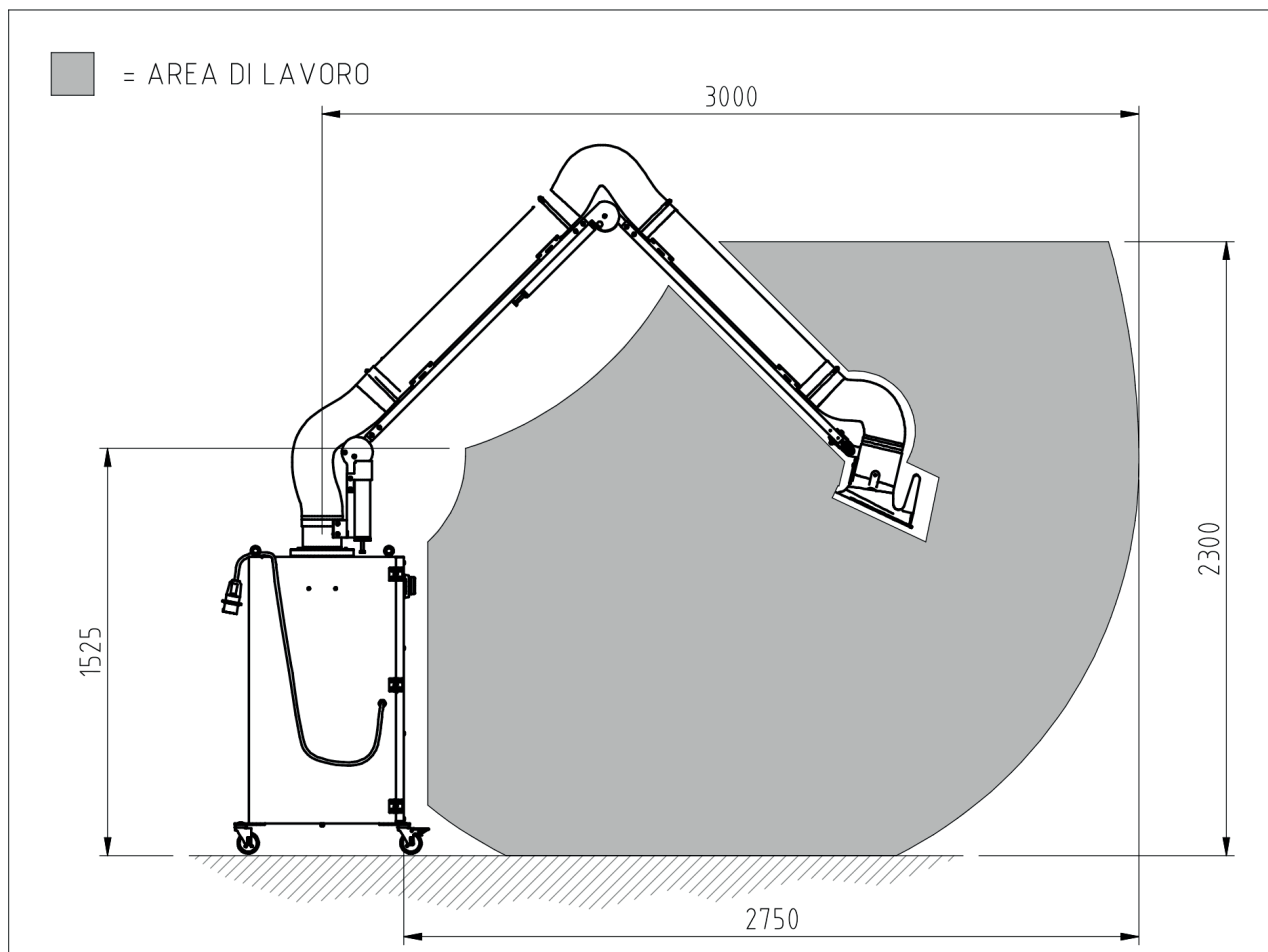
 Unidad móvil de 1,5 HP para aspirar y filtrar humos de soldadura en condiciones de empleo ligero. Ágil, manejable y funcional, ECOMINOR está equipada con una batería de 4 filtros en secuencia para filtrar mecánicamente y desodorizar el humo aspirado. Equipado con brazo articulado de 3 m. Caudal máx. 1.400 m³/h. Empleos ligeros.



Dettagli tecnici - Technical details - Données techniques - Technische Daten - Datos Técnicos

Model		%	m ²		Carb. Kg	Carb. Lbs		cert	
ECOMINOR-NG	1400 m ³ /h 823 c.f.m.	95	1,2	94 kg 207 lb	4,5	9,9	400 V - 50 Hz - 3ph (3p+T)	CE	1,5 Hp 1,1kW
ECOMINOR-NG-CARB	1400 m ³ /h 823 c.f.m.	90		99 kg 218 lb	10	22	400 V - 50 Hz - 3ph (3p+T)	CE	1,5 Hp 1,1kW
ECOMINOR-NG-C	1600 m ³ /h 882 c.f.m.	99,9	6	94 kg 207 lb	-	-	400 V - 50 Hz - 3ph (3p+T)	CE	1,5 Hp 1,1kW
ECOMINOR-NG-C-4.5CA	1600 m ³ /h 882 c.f.m.	99,9	6	99 kg 218 lb	4,5	9,9	400 V - 50 Hz - 3ph (3p+T)	CE	1,5 Hp 1,1kW
ECOMINOR-N-C-10CA	1600 m ³ /h 882 c.f.m.	99,9	6	104 kg 229 lb	10	22	400 V - 50 Hz - 3ph (3p+T)	CE	1,5 Hp 1,1kW
ECOMINOR-NG-C/P	1600 m ³ /h 882 c.f.m.	99,9	6	94 kg 207 lb	-	-	400 V - 50 Hz - 3ph (3p+T)	CE	1,5 Hp 1,1kW
ECOMINOR-NG-C/P-4.5CA	1600 m ³ /h 882 c.f.m.	99,9	6	99 kg 218 lb	4,5	9,9	400 V - 50 Hz - 3ph (3p+T)	CE	1,5 Hp 1,1kW
ECOMINOR-NG-C/P-10CA	1600 m ³ /h 882 c.f.m.	99,9	6	104 kg 229 lb	10	22	400 V - 50 Hz - 3ph (3p+T)	CE	1,5 Hp 1,1kW
ECOMINOR-NG-HEPA	1400 m ³ /h 823 c.f.m.	99,95	6	94 kg 207 lb	-	-	400 V - 50 Hz - 3ph (3p+T)	CE	1,5 Hp 1,1kW
ECOMINOR-NG-HEPA-4.5CA	1400 m ³ /h 823 c.f.m.	99,95	6	99 kg 218 lb	4,5	9,9	400 V - 50 Hz - 3ph (3p+T)	CE	1,5 Hp 1,1kW
ECOMINOR-NG-HEPA-10CA	1400 m ³ /h 823 c.f.m.	99,95	6	104 kg 229 lb	10	22	400 V - 50 Hz - 3ph (3p+T)	CE	1,5 Hp 1,1kW

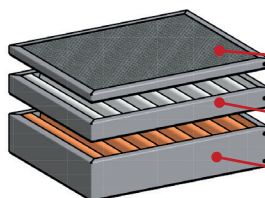
ECOMINOR -NG



ECOMINOR-NG/CART : CELLULOSE Ø350 - H300 - EN 60335-2-69 - Class M

ECOMINOR-NG/CART-P : POLYESTER Ø350 - H300 - EN 60335-2-69 - Class M

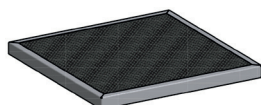
ECOMINOR-NG/CART-HEPA : POLYESTER HEPA Ø350 - H300 - EN 1822 - Class H13



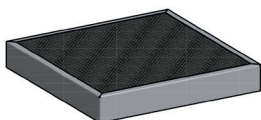
ECOMINOR-NG/RIPM : PREFILTRO METALLICO / METAL PREFILTER

ECOMINOR-NG/RIPS : PREFILTRO SINTETICO / PREFILTER

ECOMINOR-NG/RIF : FILTRO ALTA EFFICIENZA / HIGH EFFICIENCY FILTER



ECOMINOR-NG/CONT4.5 : FILTRO A CARBONI ATTIVI / CARBON FILTER 4,5 Kg



ECOMINOR-NG/CONT10 : FILTRO A CARBONI ATTIVI / CARBON FILTER 10 Kg

Tabella filtri - Filter table - Tableau des filtres - Tabelle filtern - Tabla de filtros

MODELLO	BRACCIO	FILTRI						CARBONI ATTIVI	
		FILTRI A PANNELLO			CARTUCCE			ECOMINOR- NG/CONT4.5	ECOMINOR- NG/CON10
		ECOMINOR- NG/RIPM	ECOMINOR- NG/RIPS	ECOMINOR- NG/RIF	ECOMINOR- NG/CART	ECOMINOR- NG/CART-P	ECOMINOR- NG/CART-HEPA		
ECOMINOR-NG	TECHNO3/C	✓	✓	✓	✗	✗	✗	✓	✗
ECOMINOR-NG-CARB	TECHNO3/C	✓	✓ (x2)	✗	✗	✗	✗	✗	✓
ECOMINOR-NG-C	TECHNO3/C	✗	✗	✗	✓	✗	✗	✗	✗
ECOMINOR-NG-C-4.5CA	TECHNO3/C	✗	✗	✗	✓	✗	✗	✓	✗
ECOMINOR-NG-C-10CA	TECHNO3/C	✗	✗	✗	✓	✗	✗	✗	✓
ECOMINOR-NG-C/P	TECHNO3/C	✗	✗	✗	✗	✓	✗	✗	✗
ECOMINOR-NG-C/P-4.5CA	TECHNO3/C	✗	✗	✗	✗	✓	✗	✓	✗
ECOMINOR-NG-C/P-10CA	TECHNO3/C	✗	✗	✗	✗	✓	✗	✗	✓
ECOMINOR-NG-HEPA	TECHNO3/C	✗	✗	✗	✗	✗	✓	✗	✗
ECOMINOR-NG-HEPA-4.5CA	TECHNO3/C	✗	✗	✗	✗	✗	✓	✓	✗
ECOMINOR-NG-HEPA-10CA	TECHNO3/C	✗	✗	✗	✗	✗	✓	✗	✓
ECOMINOR-NG-FLEX	ARMFLEX	✓	✓	✓	✗	✗	✗	✓	✗
ECOMINOR-NG-FLEX-CARB	ARMFLEX	✓	✓ (x2)	✗	✗	✗	✗	✗	✓
ECOMINOR-NG-FLEX-C	ARMFLEX	✗	✗	✗	✓	✗	✗	✗	✗
ECOMINOR-NG-FLEX-C-4.5CA	ARMFLEX	✗	✗	✗	✓	✗	✗	✓	✗
ECOMINOR-NG-FLEX-C-10CA	ARMFLEX	✗	✗	✗	✓	✗	✗	✗	✓
ECOMINOR-NG-FLEX-C/P	ARMFLEX	✗	✗	✗	✗	✓	✗	✗	✗
ECOMINOR-NG-FLEX-C/P-4.5CA	ARMFLEX	✗	✗	✗	✗	✓	✗	✓	✗
ECOMINOR-NG-FLEX-C/P-10CA	ARMFLEX	✗	✗	✗	✗	✓	✗	✗	✓
ECOMINOR-NG-FLEX-HEPA	ARMFLEX	✗	✗	✗	✗	✗	✓	✗	✗
ECOMINOR-NG-FLEX-HEPA-4.5CA	ARMFLEX	✗	✗	✗	✗	✗	✓	✓	✗
ECOMINOR-NG-FLEX-HEPA-10CA	ARMFLEX	✗	✗	✗	✗	✗	✓	✗	✓

Dimensioni - Dimensions - Dimensions - Abmessungen - Dimensiones

